

Welcome to SDSU



SDSU

College of Engineering

Aerospace Engineering

Master of Science program (MSAE)

An Introduction to the AE Faculty



Chair's Message

Come join us! The Aerospace Engineering Department at San Diego State University is interested in attracting talented students to our M.S. and Ph.D. degree programs offering specializations in aerodynamics, astrodynamics/guidance and control, and structural mechanics. Our graduate programs through rigorous and innovative curriculum and high impact research experiences educate students to become the next generation of leaders in Aerospace Engineering.



Ping Lu
Professor and Chair
Guidance and Control, Aerospace
Autonomy
Email: plu@sdsu.edu

Program highlights:

- Well-recognized graduate program
- Distinguished faculty
- State-of-the-art research facilities
- Close connections with industry and national labs

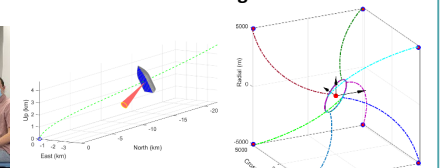
Funding Agencies: NASA, AFOSR, ONR, US Army, NSF, DoE, FAA and a variety of industrial sponsors.

About San Diego: San Diego enjoys year-round good weather. The diverse population offers multicultural experiences and a cosmopolitan living experience. San Diego is also home to many aerospace companies, including Northrop Grumman, General Atomics, Lockheed Martin, Solar Turbines, Boeing, ViaSat, UTC Aerospace Systems, US Naval Air Systems Command etc.

Prof. Lu's research group of students in Computational Guidance and Control



Advanced planetary powered descent guidance

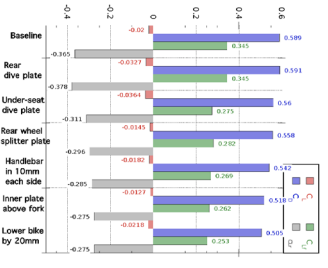




Joseph Katz

Professor
Expertise: Fluid
Mechanics,
Aerodynamics
Email:
jkatz@mail.sdsu.edu

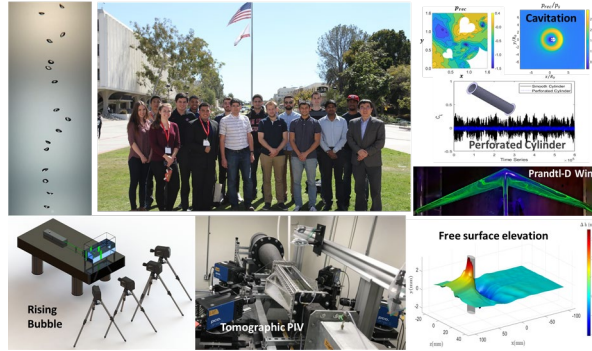
<https://aerospace.sdsu.edu/faculty/josephKatz>



Xiaofeng Liu

Associate Professor,
AE Graduate Advisor
Experimental Fluid
Dynamics, Aerodynamics
and Multiphase Flow
Xiaofeng.Liu@sdsu.edu

Lab webpage: <http://liu.sdsu.edu>



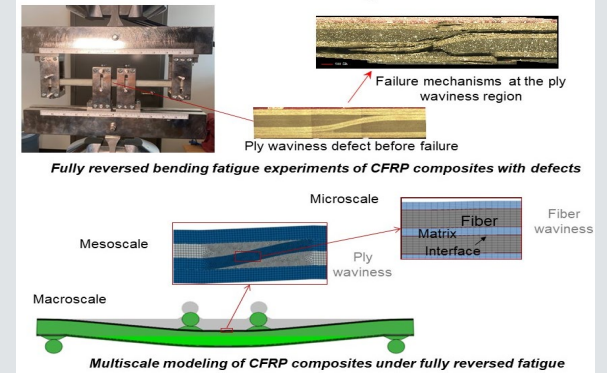
Laboratory of Advanced Experimental Fluid Dynamics



Satchi Venkataraman

Professor
Aerospace Structures,
Composite Materials,
and Design Optimization
Email:
satchi@mail.sdsu.edu

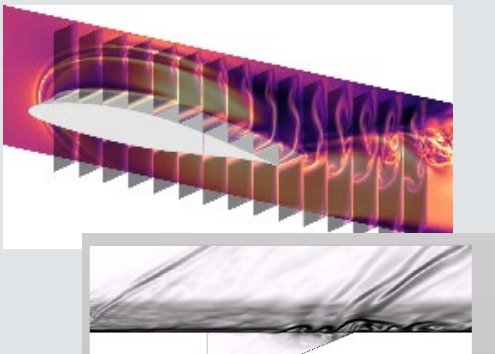
<http://engineering.sdsu.edu/~satchi/>



Gustaaf (Guus) Jacobs

Professor
Computational Fluid
Dynamics CFD
gjacobs@mail.sdsu.edu

<https://newscenter.sdsu.edu/citer/>



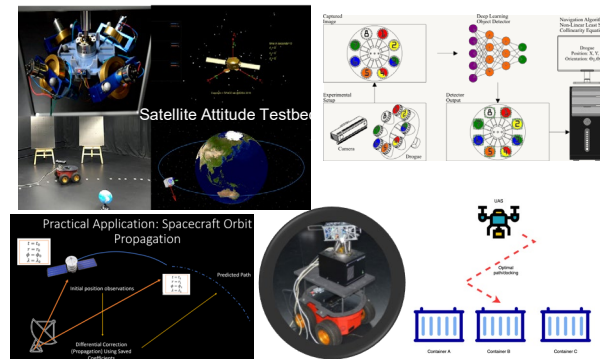
Unsteady Simulation of Flow in Propulsion Systems



Ahmad Bani-Younes

Associate Professor
Astrodynamics,
Spacecraft Guidance
Navigation and Control
abaniyounes@sdsu.edu

Lab webpage: <https://space.sdsu.edu>



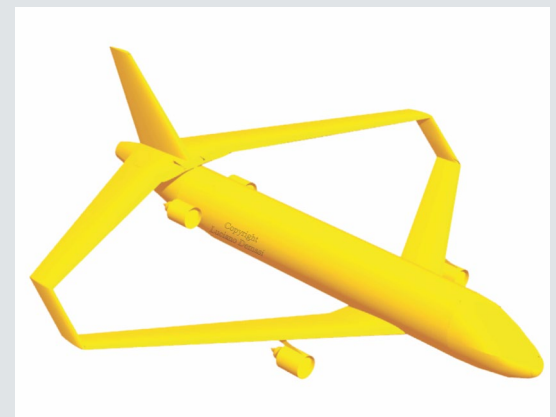
Spacecraft Platform for Astronautics and Celestial Emulation



Luciano Demasi

Professor
Expertise: Aerospace
Structures, Aeroelasticity
Email:
ldemasi@mail.sdsu.edu

<https://aerospace.sdsu.edu/faculty/lucianoDemasi>

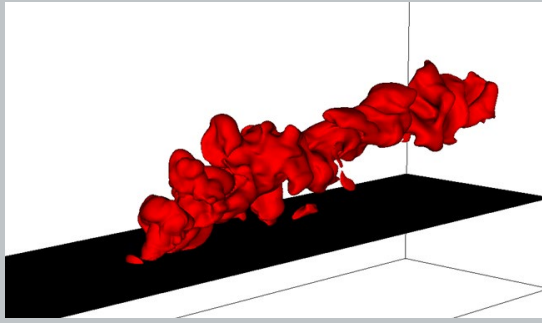




Pavel Popov

Assistant Professor
CFD, Propulsion,
Plasma-combustion
interactions
ppopov@sdsu.edu

<https://aerospace.sdsu.edu/faculty/pavelpopov>



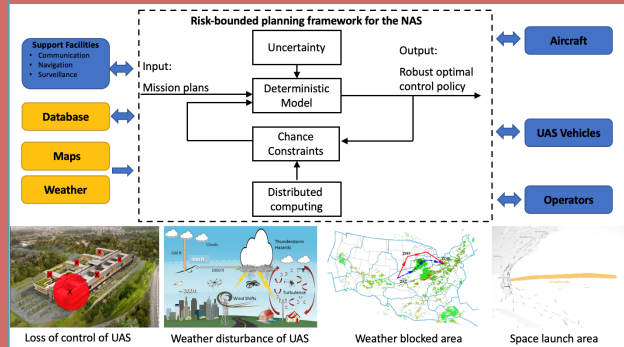
Visualization of a turbulent hydrogen jet in air crossflow



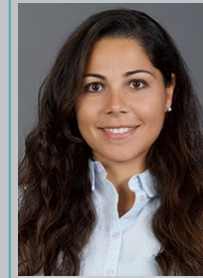
Jun Chen

Associate Professor
Dynamics, Control, and
Optimization for large-
scale networked
dynamical systems
jun.chen@sdsu.edu

Lab webpage: <https://junchen.sdsu.edu/>

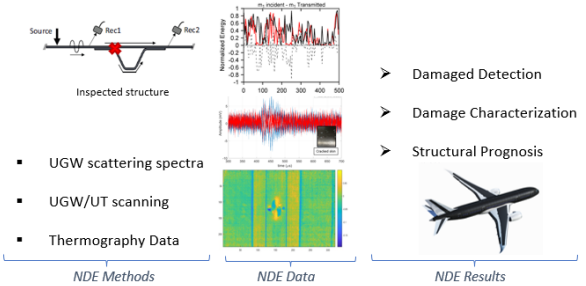


Autonomy & Control for Intelligent Air Transportation



Margherita Capriotti

Assistant Professor
Non-destructive evaluation
techniques, ultrasonic guided
wave (UGW) propagation
and scattering, composite
structures and biomedical
applications
mcapriotti@sdsu.edu



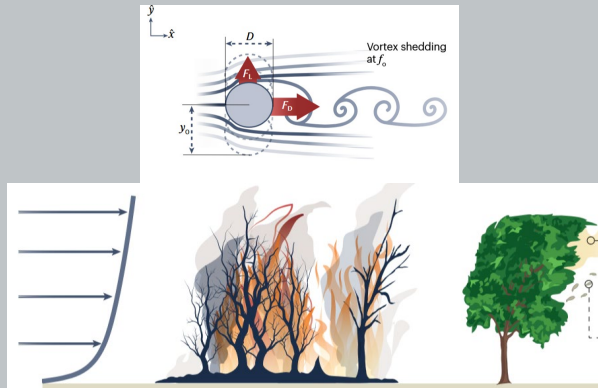
Non-Destructive Evaluation (NDE) database
and analysis for damage characterization



Roni Goldshmid

Assistant Professor
Expertise: Fluid mechanics,
thermal fluids, machine
learning
Email: rgoldshmid@sdsu.edu

Lab webpage: experimentalfluids.com



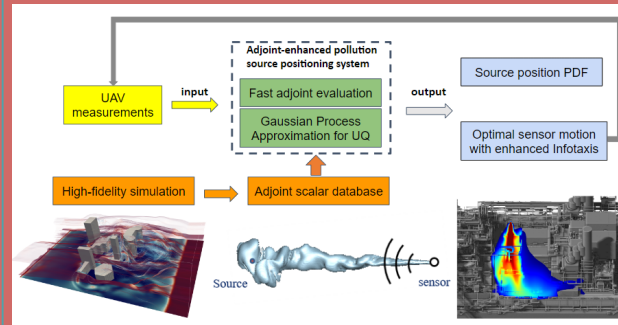
Development of wildland aerial firefighting tools



Qi Wang

Assistant Professor
Aerodynamics, Fluid
Mechanics
Email:
qwang4@sdsu.edu

Lab webpage: qiwang.sdsu.edu



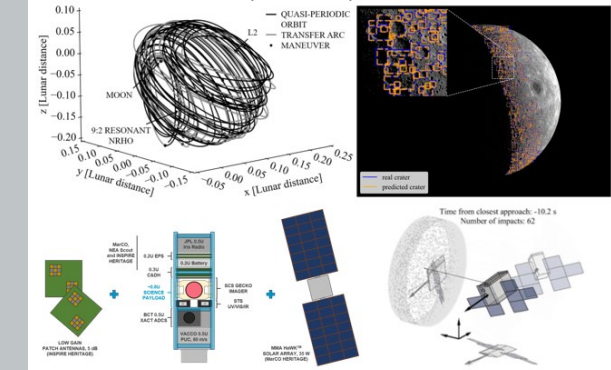
Big-data strategy for fast pollution tracking



Pablo Machuca

Visiting Assistant Professor
Expertise: Astrodynamics,
Autonomous GNC, Mission
Analysis, Systems Design
Email:
pmachuca@sdsu.edu

aerospace.sdsu.edu/people/pablo-machuca



Trajectory Design, Autonomous Optical Navigation, CubeSat
Systems Design, and GNC

Welcome to SDSU

